



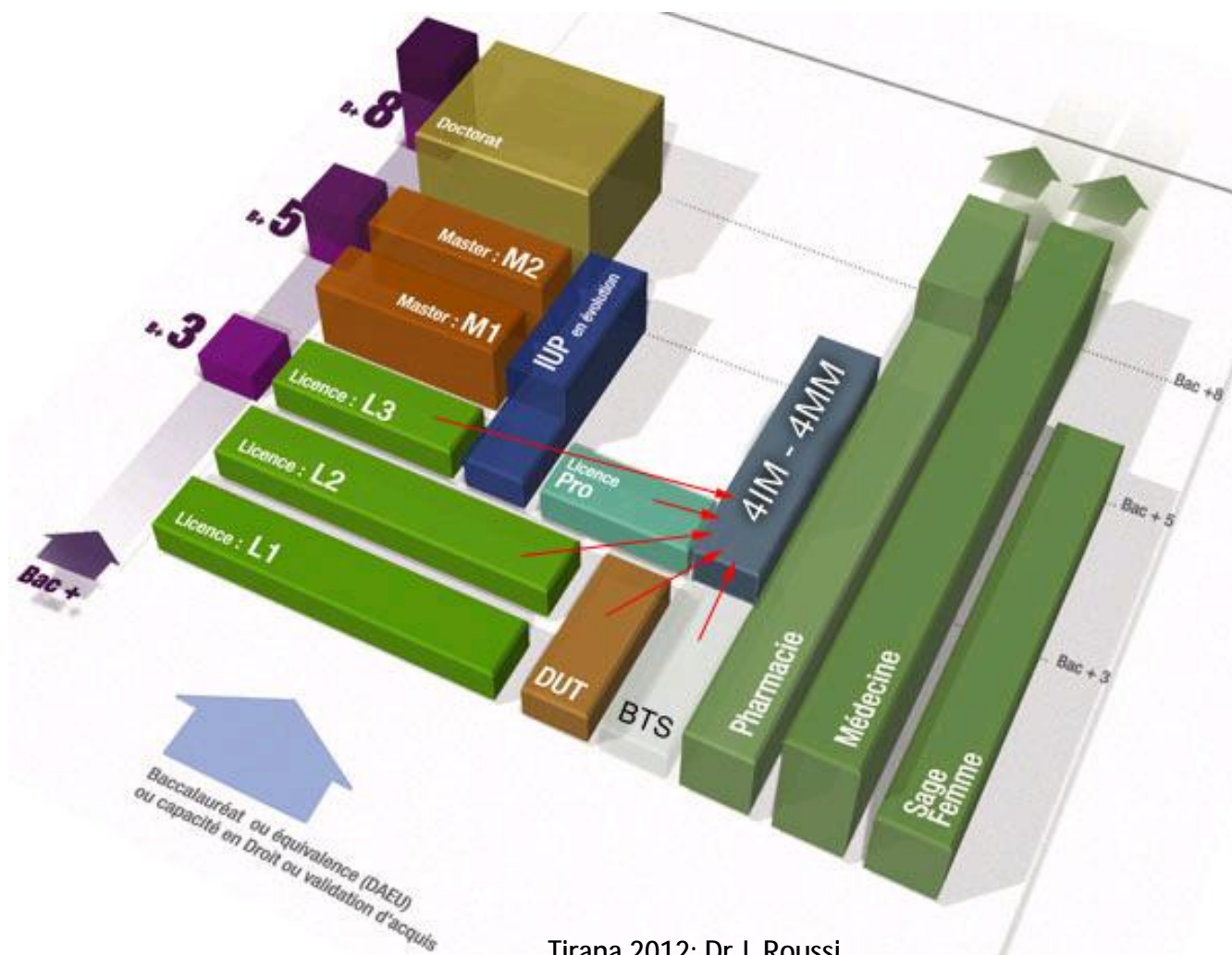
Health studies in France

Dr J. Roussi
UFR Sciences de la Santé
Paris Ile de France Ouest
Université Versailles St Quentin



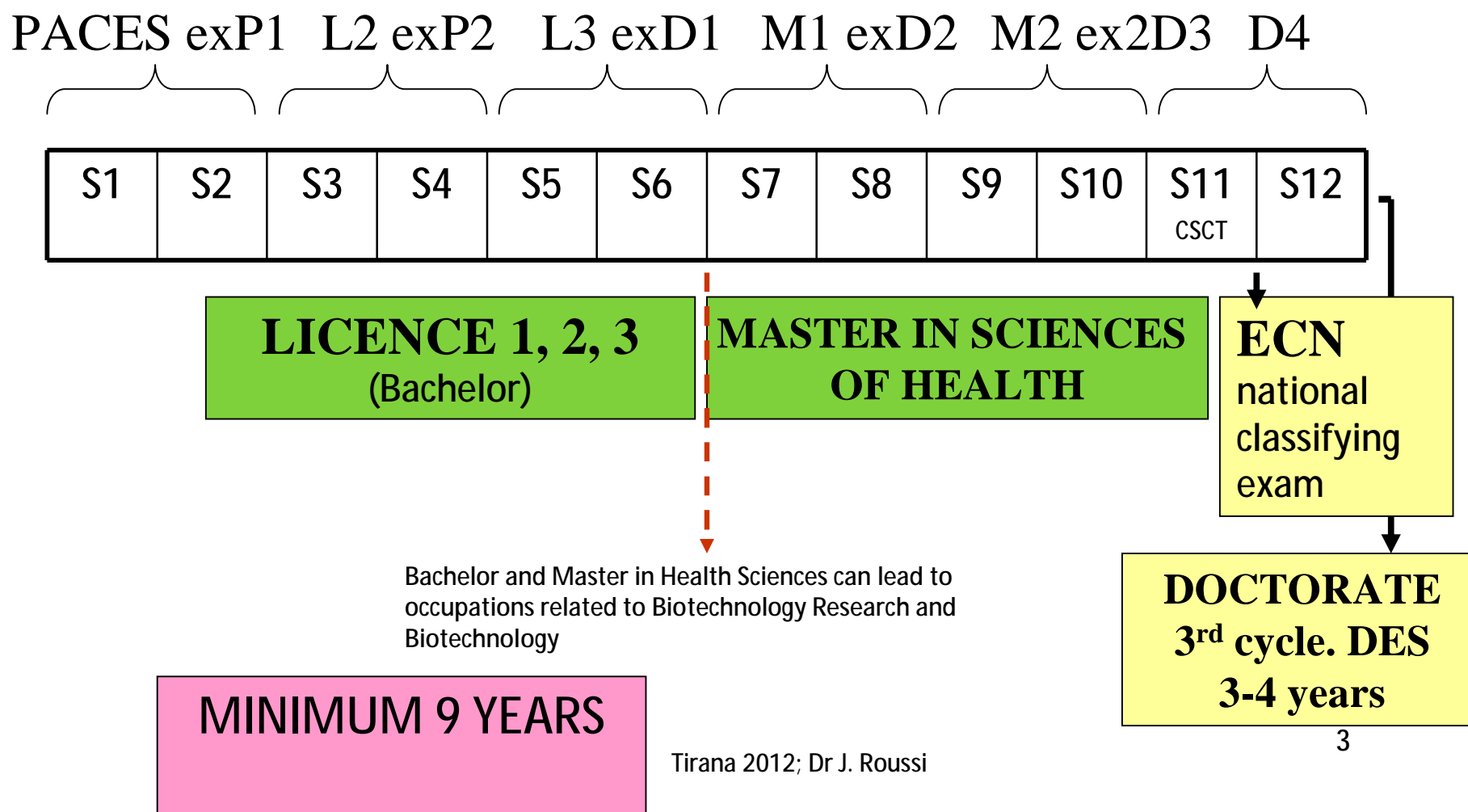
LMD: license-master-doctorat

European Undergraduate-Graduate-Post Graduate





Medical school: licence + master + doctorate





PACES: 1st common year in studies of health

- Since September 2010, 1st Year: common to the
 - Medical studies,
 - Odontology
 - Pharmaceutical studies
 - Midwife (maieutic)
- UFR PIFO: possibilities of inserting the trainings of kinesitherapy, ergotherapy, psychomotricity, L2 sciences
- Education on 2 semesters :
 - *During semester 1 and beginning of semester 2* : Same program for all the students
 - *2nd part of semester 2*: Different teaching units (EU) specific for medecine, pharmacy, maieutic, odontology
- Every student must be able to present the 4 examinations
- Reorientation for the last 20 %



PACES: teaching content

- Semester 1
 - EU1 (Teaching unit): Chemistry-biochemistry. 10 European Credits Transfer System ECTS
 - EU2: Cell Biology and Histo-embryology. 10 ECTS
 - EU3: Physics – Biophysics - Physiology. 6 ECTS
 - EU4: Biostatistics. 4 ECTS
- Semester 2
 - EU4: Physiology. 4 ECTS
 - EU5: Anatomy. 4 ECTS
 - EU6: Sciences of drug. 4 ECTS
 - EU7: Health, society, humanity. 8 ECTS
 - EU specific: 10 ECTS



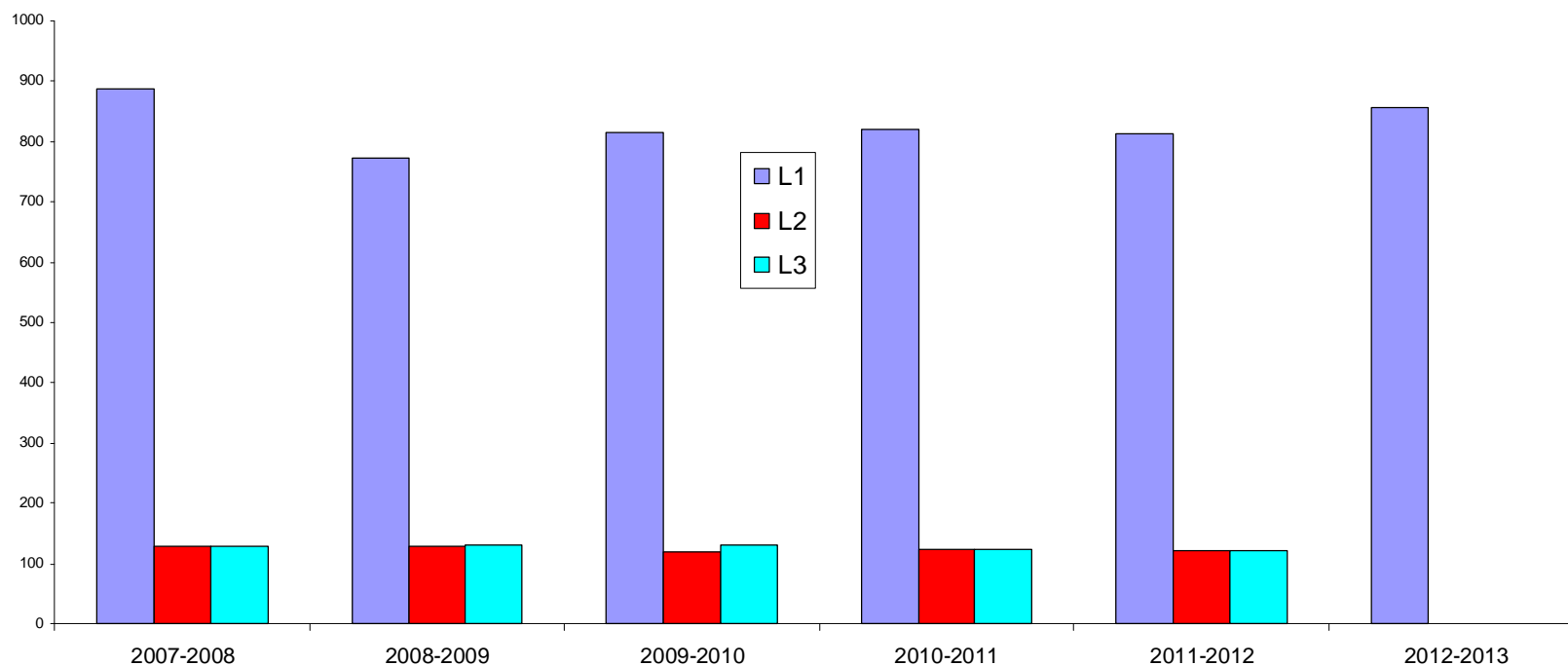
PACES: Registration and numerus clausus 2012

- 2011
- Registered 855 S1, S2 Registered -8%
- 687 Entries in competition of Medicine: 150 places
- 232 Entries in competition dentistry: 14 places
- 563 Entries in competition Pharmacy: 44 places
- 186 Entries in competition midwife: 18 places



Selection PACES-Medicine Number of undergraduates

PACES.....L2: percentage of success 14%





L2 and L3 license: Education

- 3 EU biology and social sciences and humanities. 14 ECTS
- 1 EU general semiology: 2 ECTS
- 13 EU integrated education: 84 ECTS
 - biochemistry, histo-embryology,
 - anatomy, physiology semiology medical, surgical and radiation, for each organ
- Training stages in hospital. 20 ECTS = 400h
- Optional: EU research 60 ECTS



License: Features of L2 and L3

- 1 ECTS = 8h of lectures
 - English
 - upgrade L2
 - English medical L3
- Dissections
- Critical Reading of Article (LCA)
- Emergency (AFGSU)
- Shared teaching with midwife



2nd cycle: M1 = D2, M2=D3, D4

- Educational theory:
 - conferences, lectures tutorials, seminars
 - 13 transversal modules learning medical practice, from conception to birth, etc.
- Hospital internships paid
- Validation theoretical
- 36 months of training including 1 course in internal medicine (general practitioner)
- 36 guards



Clerkship organisation in PIFO

- Training stages consisting of rotations through different hospitals.
- 60 departments of a teaching hospital
- L2:
 - Training learning nursing actions
 - Training learning semiology
 - respectively three weeks full time.
- L3
 - 2 training stages of semiology (3 weeks full-time).
- D2D3D4
 - medical students paid
 - Four annual trainings, including integrated courses
- Evaluation of training stages by students
 - L2D1: since 2004
 - L2D3D4: since 1997



Foch



Sèvres



St Cloud



Poincaré



UFR SCIENCES DE LA SANTE



A. Paré



Ste Perine



Poissy



A. Mignot



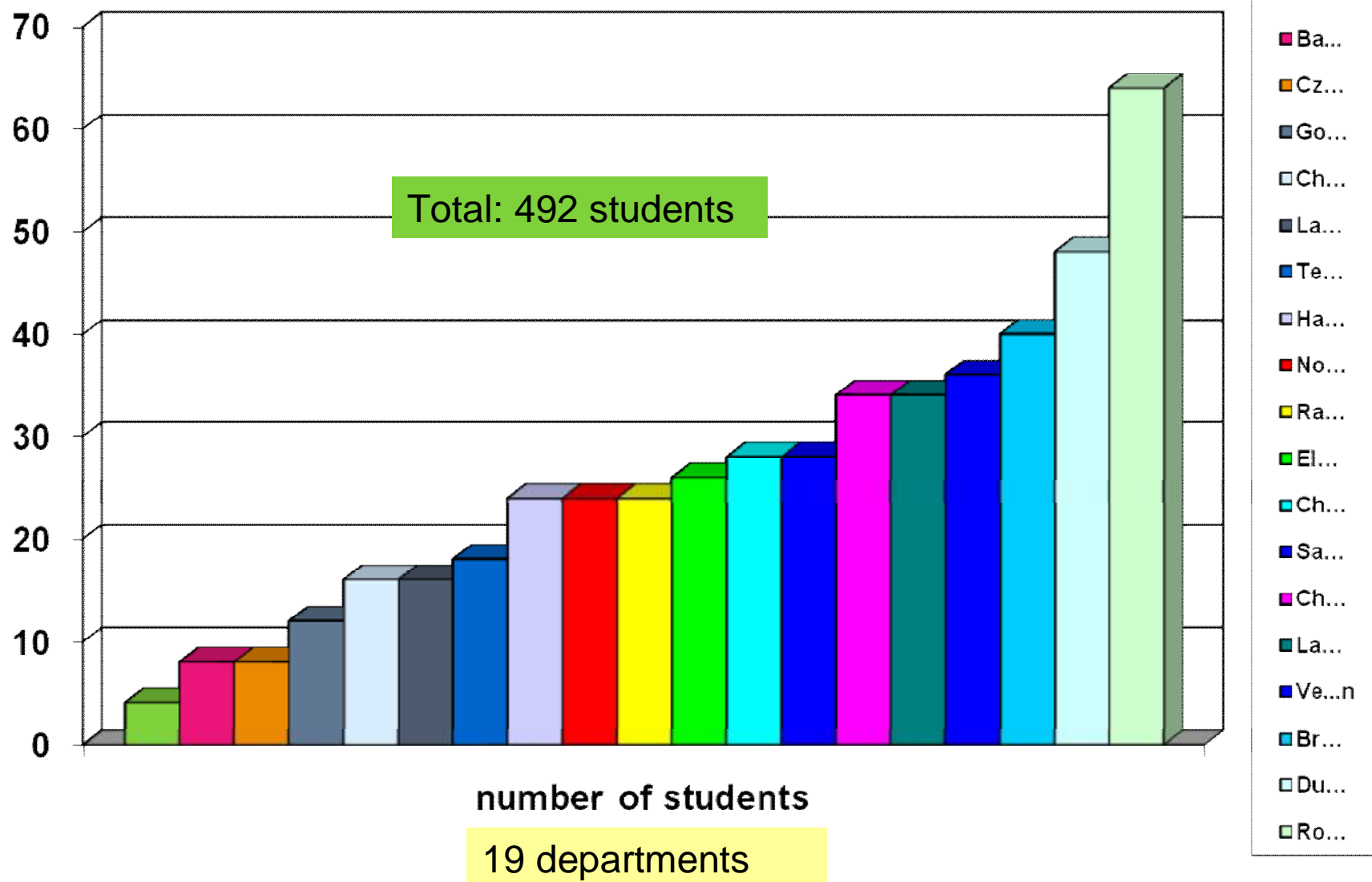
Clinique Porte Verte



St Germain



Exemple 2012-2013 CH AMBROISE PARE





Clerkship in general medecine

- In town
- Mandatory in D3, introduced in 2010
- Total time: 60 half-days
- Teacher training course by the Department of Internal (general) Medicine
- USER:
 - 3 doctors tutors / student
 - 2 students / user
- Assessment made by the Department of Internal (general) Medicine



Training stage in medico-social group

- New experience September 2011:
- Two students D3-D4
- Training stage in GERONDICAP, medico-social Group, in association with the Department of Geriatrics, CH La Verrière
- Supports structured around work with social workers teachers, educators, instructors workshop, psychologists, psychomotor
- Activity classic geriatric hospital



Training stage in pharmaceuticals group

- New experience September 2011.
- Two students D3-D4
- Sanofi, Aventis, PARIS. Service Scientific Affairs.
- Courses in the following units:
 - Medical Information, Pharmacovigilance,
 - Clinical Operations, Research and Development Centre
- Evaluation by two first students in 2011: very favorable



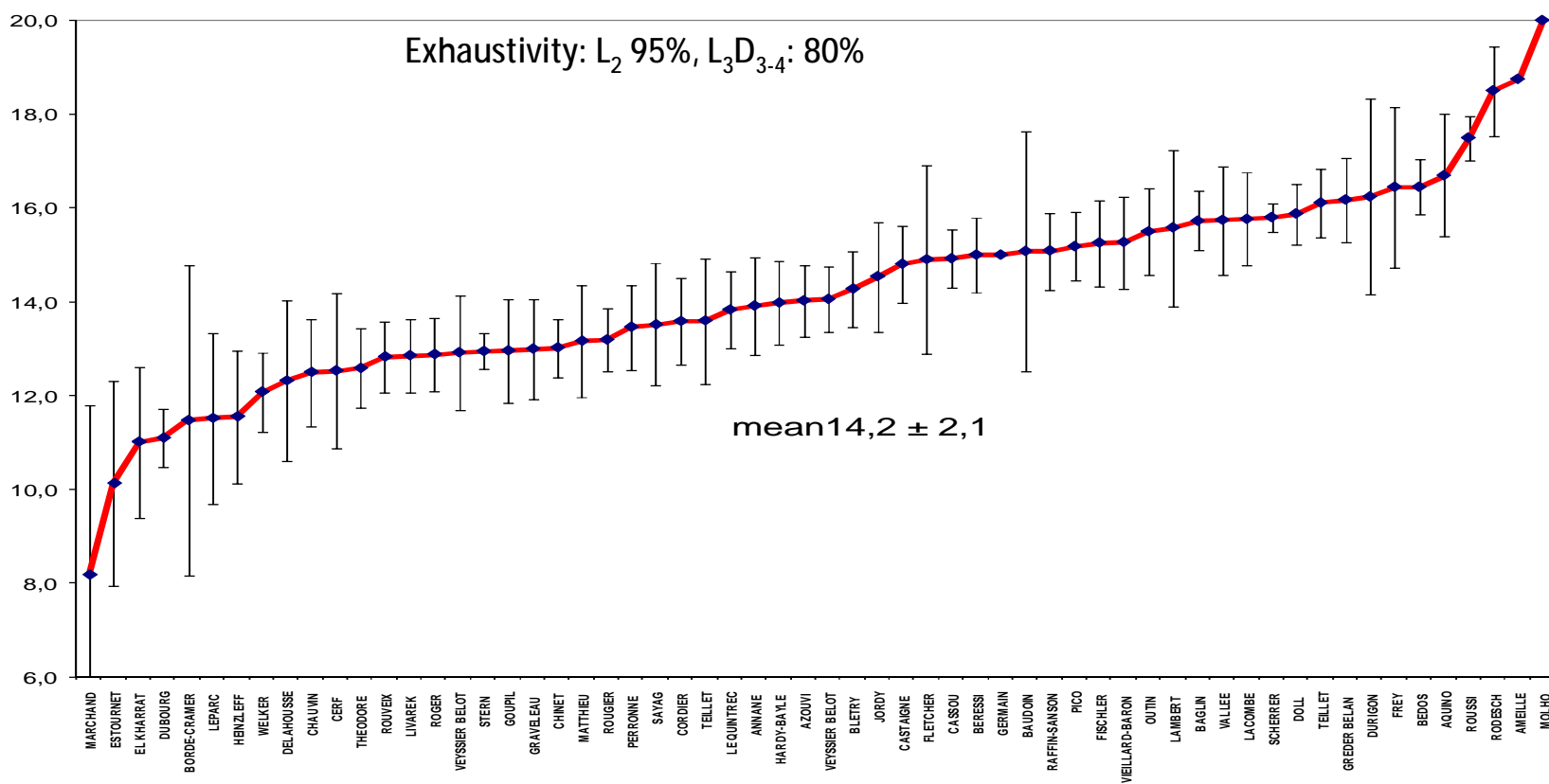
Free training stage for D4

- Courses selected high clinical training and research
 - Subsidized internships
 - 6 weeks abroad
 - Selected services
 - Selected students: the best in D3
 - Total 10 000 €
 - 2009-2012: 5 students /year D4
 - SWITZERLAND
 - BRAZIL
 - USA ...
- Internships volunteers abroad
- 2012-2013: 30 students



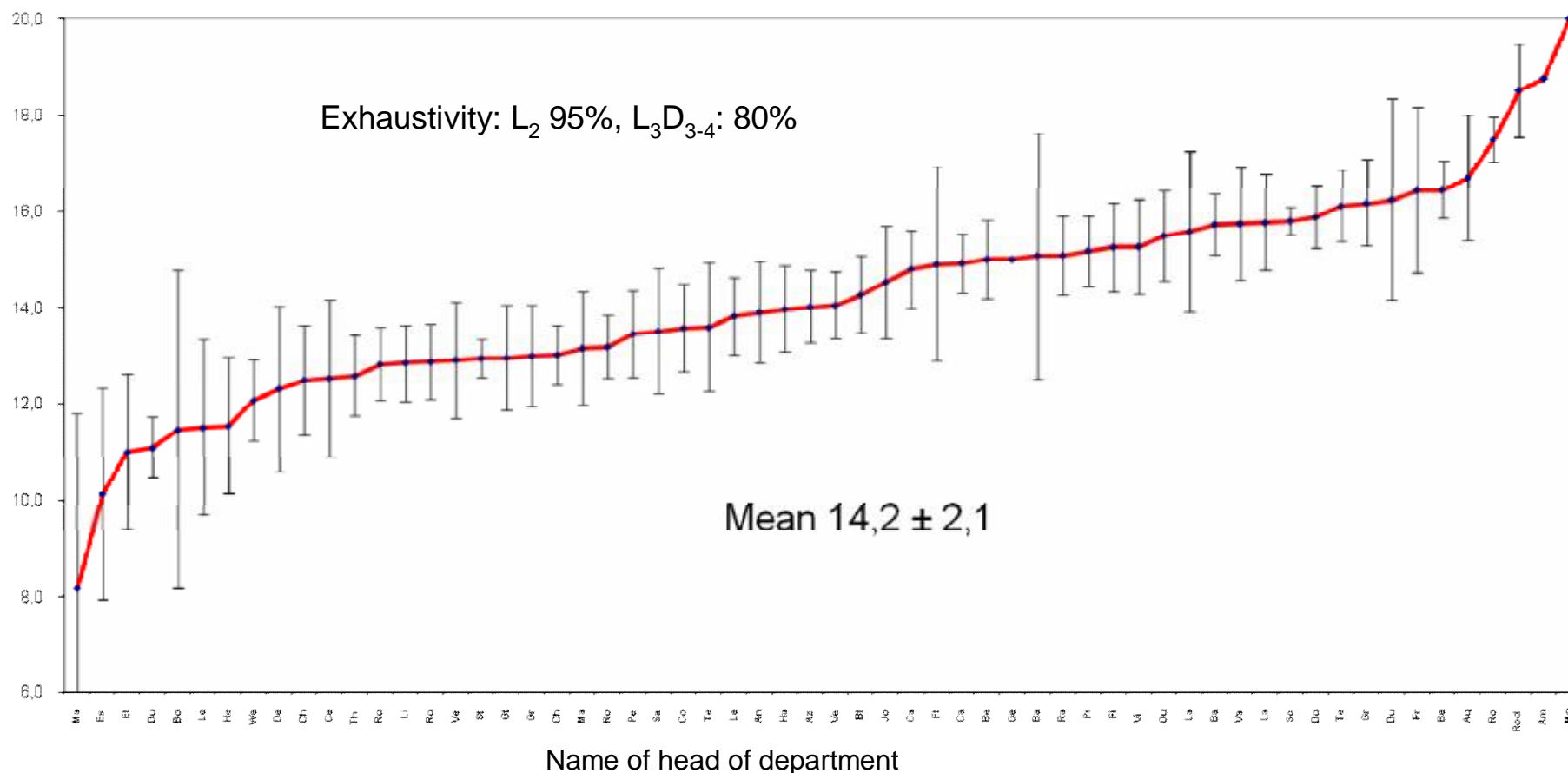
Training stage and teaching evaluation

- Evaluation by the students of the quality of teacher
 - carried out during the teaching and training,
 - Creating an emulation learning.
 - Improving the educational content of education.
- Evaluation by the students of the clinical training stage



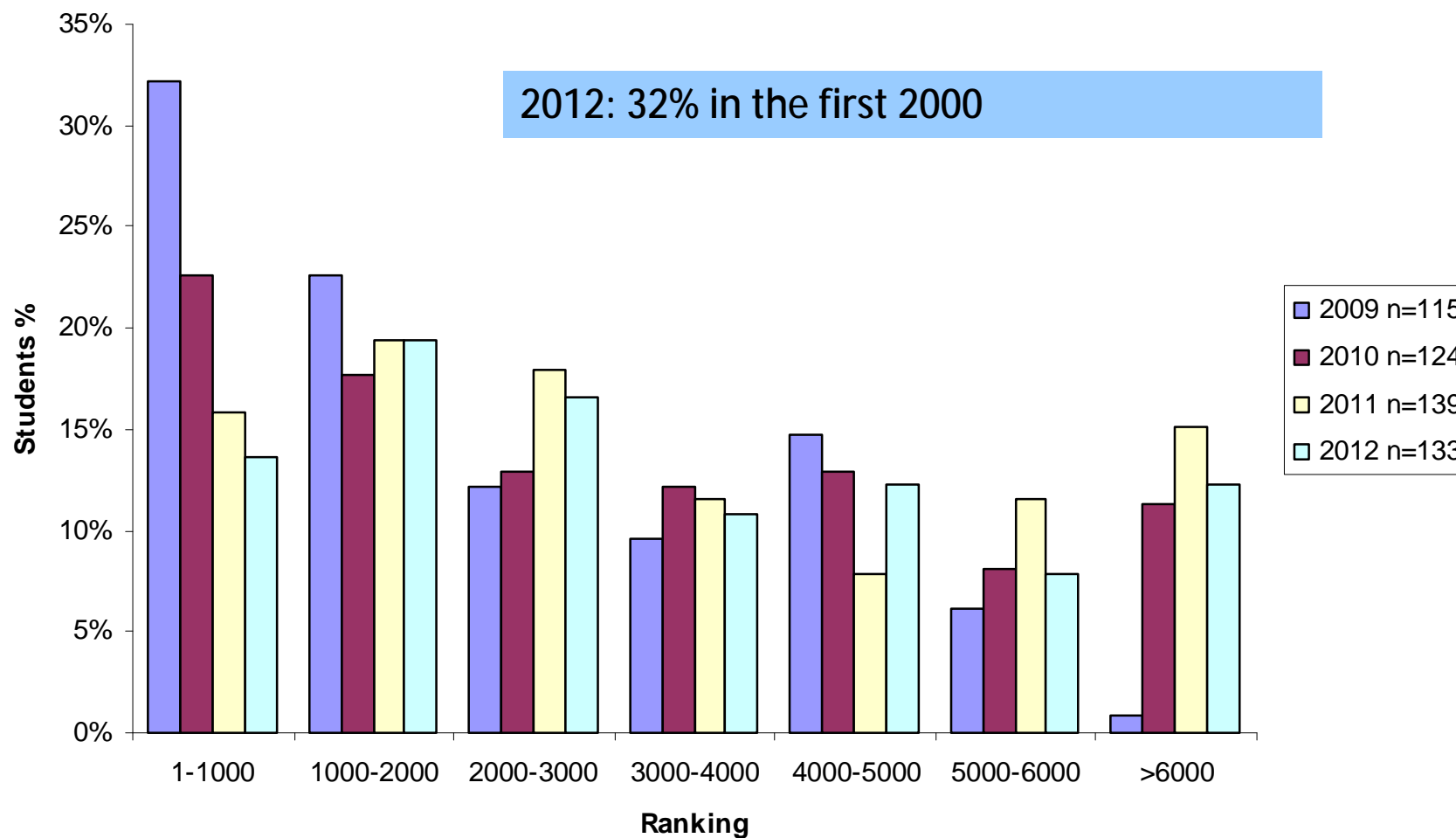


Training stage evaluation L2-3, D3-4: 2004-2010



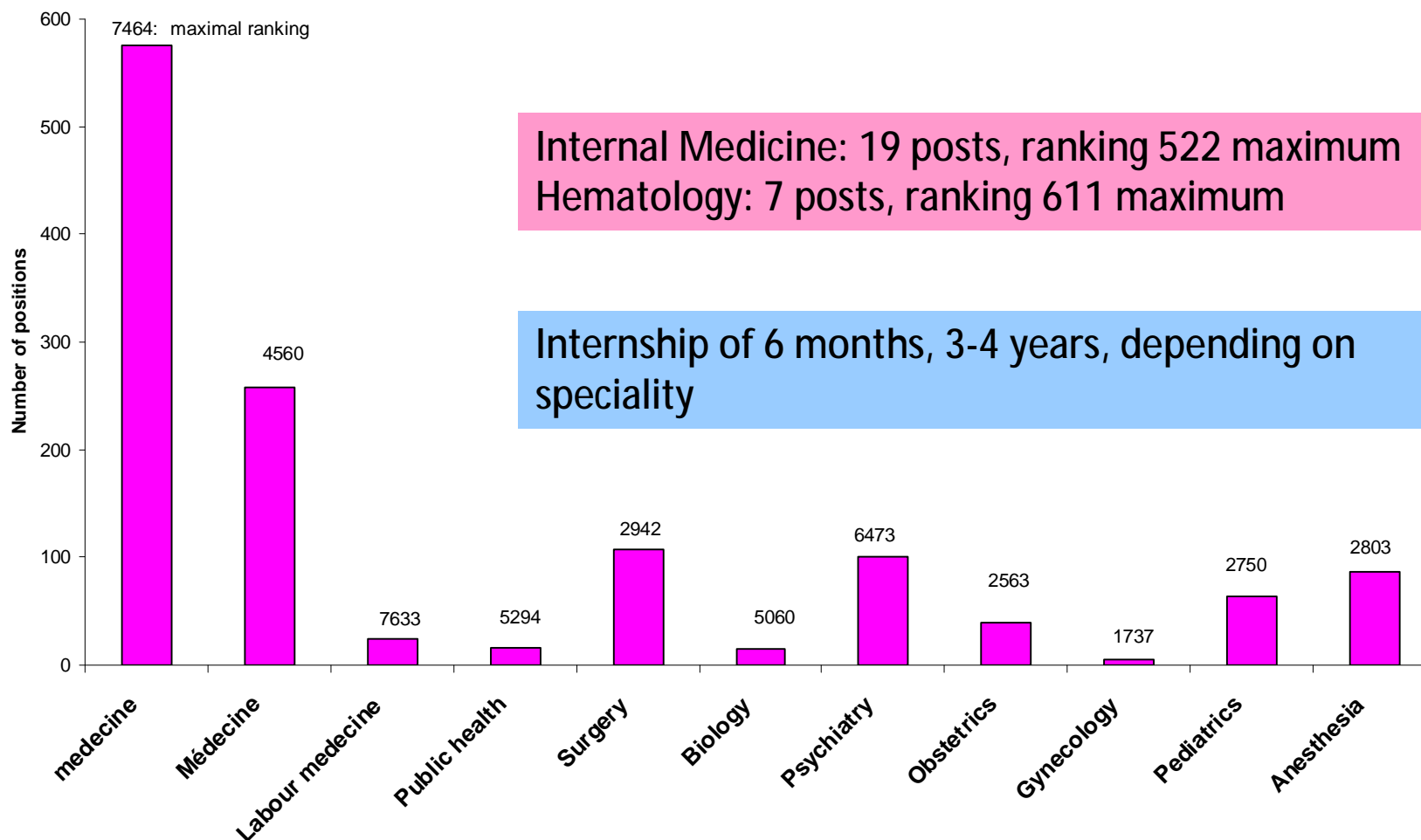


PIFO: ECN Results





ECN PARIS 2012: positions for speciality and rank classification





And finally, Thesis : Medical doctor



Tirana 2012; Dr J. Roussi



Universitary medical center

- Finding # 1:
 - Lack of land in general medicine training stage for graduate students of medical studies
 - DES of general medicine: 1 semester mandatory outpatient, ambulatory preferentially one half (SASPAS) and remains in hospital PLD1
 - Need to create new masters golf course and internship
- Finding # 2:
 - Lack of current and future physicians in the territory (retirement, numerus clausus)

Slide 25

PLD1

1 semestre ambulatoire obligatoire, 1 semestre prérentiellment ambulatoire (SASPAS) et le reste à l'hôpital

Pierre-Louis DRUAIS, 11/25/2012



University medical center

- Idea:
 - Creation of a university medical center or health center
 - Integration of diverse health professions : medical doctor, general practitioner, nurses, maieutic, physiotherapy, dentists, speech ...
- Threefold mission
 - Care
 - Teaching
 - Medical research

Slide 26

PLD2

1 semestre ambulatoire obligatoire, 1 semestre prérentiellement ambulatoire (SASPAS) et le reste à l'hôpital

Pierre-Louis DRUAIS, 11/25/2012



Thank you for your attention